

- 4 DEC 2015

3 December 2015

Martin Place Siege Anniversary Residents & Business Owners

Dear resident / business owner,

The New South Wales Government would like to advise you of the activities planned to mark the anniversary of the Martin Place Siege on **Tuesday, 15 December 2015**.

The anniversary will see an appropriate ceremony held in Martin Place on Tuesday 15 December 2015, with details as follows;

- The ceremony will be held in the Martin Place precinct between Phillip Street and Elizabeth Street from 8:15pm until approximately 9:00pm.
- Additional public viewing areas will be available in the Martin Place precinct between Phillip Street and Macquarie Street, and also Elizabeth Street to Castlereagh Street.
- There will be restricted pedestrian access on Phillip Street West and to some Martin Place train station entrances on Tuesday 15 December from 6:00pm until 9:30pm.

The Ceremony will be followed by projections onto the façade of 53 Martin Place. These projections will be shown from approximately 8:30pm until midnight from Tuesday 15 to Saturday 19 December.

Road closures

Road closures will be in place on Phillip Street between King Street and Hunter Street from:

- 10:30am until 2:00pm on Sunday 13 December.
- 5:00pm until 10:00pm on Tuesday 15 December.
- 10:30am until 2:00pm on Sunday 20 December.

There will be managed access to buildings and carparks through road closure access points on Sunday 13 December and Sunday 20 December. During road closure timings on Tuesday 15 December, there will be egress only, no vehicles will be granted access to road closure area.

Special event clearways

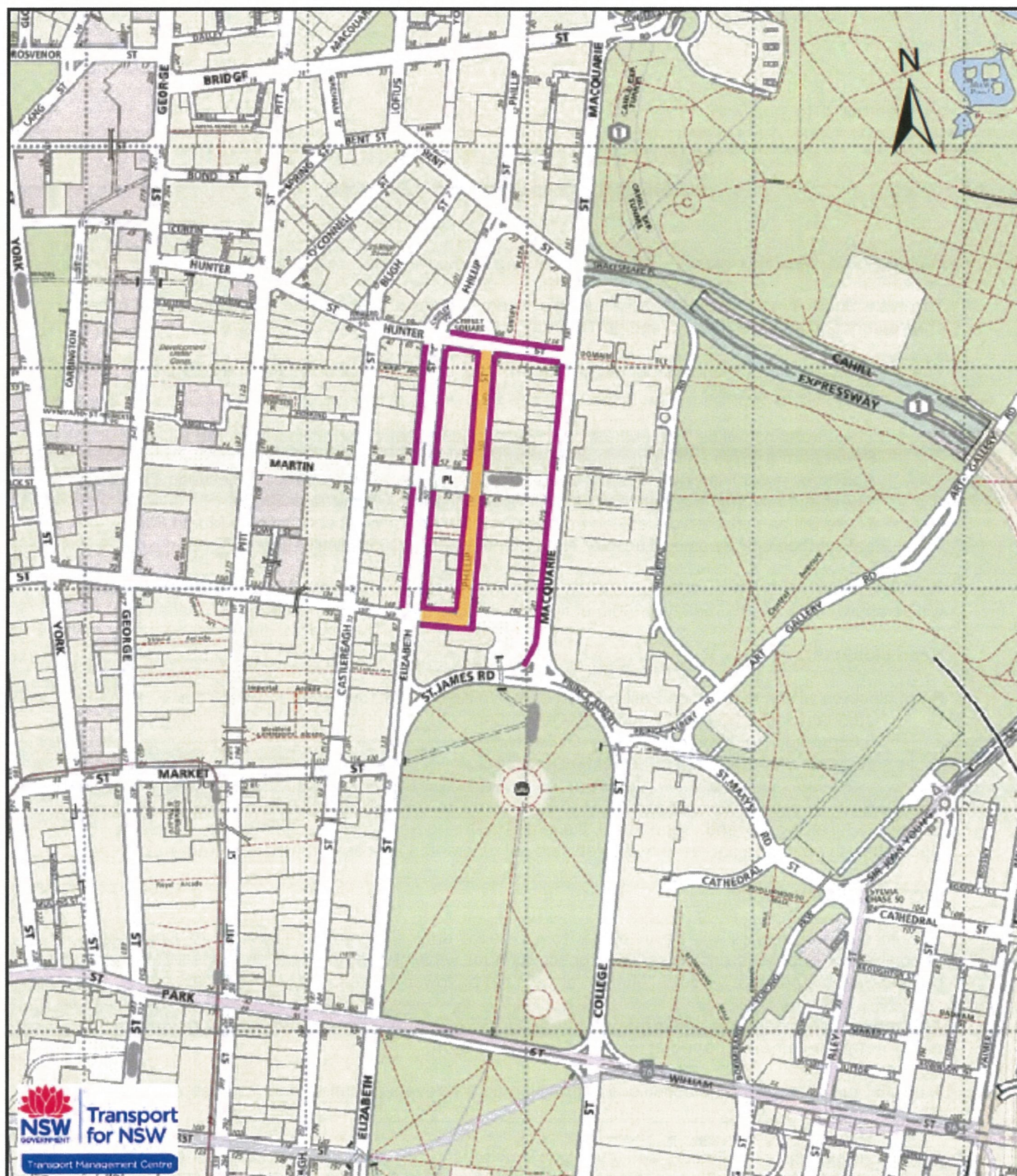
Special event clearways will be in place from 3:00pm until 10:00pm on Tuesday 15 December. Special event clearways are no parking zones, even for vehicles with local resident or RMS Mobility parking Scheme permits. Vehicles left in clearways will be towed and a towing fee applies.

Any businesses requiring deliveries on Tuesday 15 December should ensure they occur prior to the commencement of special event clearways at 3pm.

A map of the changed traffic conditions is provided on the reverse of this letter. You can also find all the information at www.livetraffic.com or by calling the [132 701 Traffic Information Line](tel:132701).

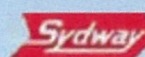
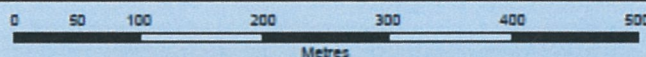
We appreciate your cooperation, and invite you to join us in commemorating an event that united us as a stronger community.

Martin Place Siege Anniversary - Tuesday 15 December 2015



Legend

- Special Event Clearway 3pm - 10pm Tue 15 Dec
- Road Closure 5pm - 10pm Tue 15 Dec



Copyright Melway Publishing 2010
Reproduced from Sydney Edition 15 with permission

Map by Major Events Section, Transport Management Centre Eveleigh NSW.
Base data © Copyright Melway Publishing 2014. (File: VROGIS mxd/Police Event - 15 December 2015 A4.mxd)